

# Feed-in Tariffs

what we have to offer

**Feed-in Tariffs (FITs)** make renewable generation **more financially rewarding** for smaller installations and help reduce the UK's carbon emissions. You receive a fixed long term tariff for every unit of electricity generated, even if you use it all onsite.

See **how EDF Energy can help you** benefit as a FITs generator.

#### Contents

- Are you eligible for FITs?
- How to sign up
- Export payments
- Registering an export MPAN
- Application checklist
- Frequently asked questions
- Jargon buster

## Are you eligible for FITs?



### There are four main factors which work towards your FITs eligibility;

**1. Technology:** you must have a wind turbine, solar photovoltaic (PV), hydro-electric, anaerobic digestion or a micro CHP generator.

**Size:** FITs are for generators with an installed capacity no more than 5MW\* with the exception of micro CHP which is 2kW.

**2. Accreditation:**

- Micro generation Certification Scheme (MCS) Accredited – this is an independent scheme that certifies installers and micro generation products below 50kW in accordance with industry standards. Any system below 50kW other than Anaerobic Digestion must have MCS accredited equipment and be fitted by a MCS Accredited installer. Your installer will provide you with a MCS certificate once the installation is complete, and we'll need a copy of this when you sign up.
- Systems over 50kW and anaerobic digestion installations are not covered by the MCS and must apply directly through the ROO-FIT accreditation process managed by Ofgem.

Generators must gain accreditation from Ofgem before signing up to the FIT scheme. When you become ROO-FIT accredited, you will receive a ROO-FIT accreditation letter from Ofgem. We'll need a copy of this as proof of accreditation. For more information on accrediting your installation, contact Ofgem at: [renewable@ofgem.gov.uk](mailto:renewable@ofgem.gov.uk)

**3. Installation date:** Your installation must be commissioned on or after the 15 July 2009 to be eligible.

**4. Grants:** how your installation is funded will also affect your FITs eligibility. Further details can be found [here](#). We recommend you contact the organisation who provided the funding for more information.

\* Announcements have been made to consider extending the scheme to 10MW, but this is not decided yet.

# How to sign up

If you have an eligible renewable installation and wish to sign up to our FITs scheme:

**1 Complete our FITs application form and provide an initial meter reading**

You can sign up to EDF Energy's FITs scheme if you are one of the following;

- you are an existing EDF Energy customer for the electricity at the site
- you are a customer of a Voluntary FITs Supplier (this is a supplier that has less than 50,000 domestic customers) for your electricity supply at the site
- Off Grid, which means the site does not receive an electricity supply from the National Grid and is not able to export to a local distribution network

If you fall into one of the categories above, contact our Green Energy Team on **0800 404 9087\*** and ask for a FITs application form.

**2 We'll then register you on to the FITs Central Register**

When we receive your completed application we will register you onto the FITs Central Register, which is a system administrated by Ofgem and used by all FITs suppliers.

Please note that for installations greater than 50kW EDF Energy will not register you onto the FITs Central Register. Instead you will need to apply to Ofgem directly, for ROO – FIT accreditation, click [here](#) for information

**3 Ofgem will confirm to us that your installation has been registered, and then we'll send out your FITs Statement of Terms.**

Your FITs Statement of Terms will detail the terms and conditions of the agreement and all your accreditation details. It will also state in which months you are required to submit a meter reading.

You will then have to review, sign and return the FITs Statement of Terms to us.



\*Lines available 8am to 8pm Monday to Friday and 8.30am to 2pm on Saturday. Calls may be monitored and recorded as part of our customer care programme. Calls to '0800' numbers are free from BT landlines. Other network operators may charge for these calls.

## Export Payments

To receive the FIT export payments you will need to have the ability to export and have opted in to receive export payments.

### Installations with a total installed capacity of 30kW or below

There is currently no requirement to have an export meter. DECC have prescribed that all FIT suppliers assume 50% of a total generation (75% for hydro) is exported.

### Installations with a total installed capacity greater than 30kW

You are required to have an export meter to measure exactly what you are exporting to the grid. [If you choose not to have an export meter then you will have to opt-out of receiving export payments.](#)

### Off Grid installations

Are not entitled to export payments, as the installation is not attached to the grid and so cannot export energy. Therefore you must declare that all electricity generated is used onsite for your own consumption.

### What to do if your total installed capacity is greater than 30kW and you require an export meter:

If you require an export meter then you will need to follow our new connection process.

1. Contact your [Distribution Network Operator](#) (DNO) for an export Meter Point Administration Number (MPAN)
2. Appoint a [Meter Operator](#) (MOP) to manage the meters installation and maintenance.
3. If you are a non half hourly (NHH) import customer, you will need a contract with a Data Aggregator/ Data Collection (DA/ DC) Company. The company will collect and verify your meter data. Please contact [B2BFeedinTariff@edfenergy.com](mailto:B2BFeedinTariff@edfenergy.com) for advice on the DA/DC companies that are available to you. More details on meter operators can be found on the association of meter operators website [here](#).
4. Complete the export section in our FIT application form, and if you would like to have an export meter fitted, prior to your FIT Agreement being in place, you will need to sign our interim Export Registration Agreement.
5. EDF Energy will then register your export MPAN and send the relevant dataflows to your MOP instructing them to manage the export meter.



# Registering an export MPAN


## A step by step guide

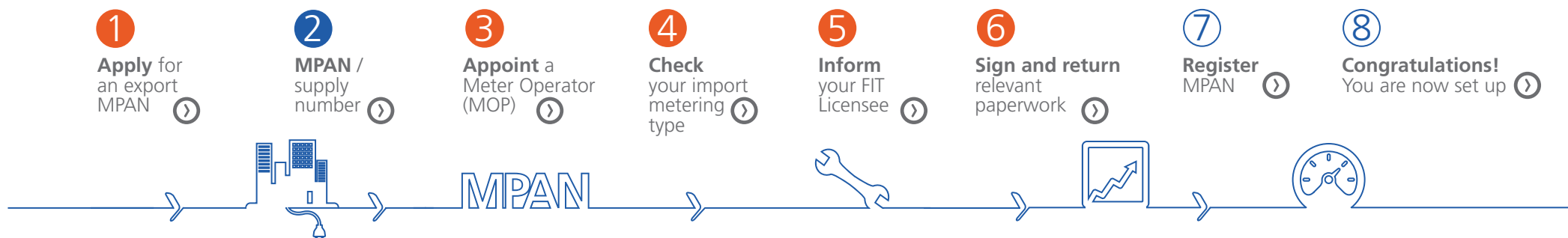
The guide below shows the steps to follow to secure a successful new electricity connection. Rollover each step for a guide to the process...

Responsibilities of each party

 Your action

 DNO action

 EDF Energy action



# Application checklist

To support your eligibility to the FIT Scheme, along with your EDF Energy FIT application form, you will need to provide the following:

## MCS Certificate

For all installations below 50kW your installer will provide you with a Microgeneration Certification Scheme (MCS)

## Energy Performance Certificate for Solar PV installations

FIT Applications for Solar PV will need to demonstrate that the building which the technology is attached or wired to has an Energy Performance Certificate rating of D or above.

Please note that if your property is not able to provide this evidence your tariff will be set at a lower rate. And should your property improve its efficiency rating in the future your tariff will remain that of when you applied to the scheme. However there will be criteria provided by Ofgem in extreme cases. For more information on Energy Performance Certificates click [here](#).

## Meter readings going forward

Under our FITs scheme you are required to provide meter readings from your total generation meter and, where applicable, your export meter. Your meter reading months will be detailed in your FIT Statement of Terms. At the beginning of these

## ROO-FIT Accreditation

For all installations greater than 50kW you will need to register your installation with Ofgem directly and provide us with your ROO-FIT Accreditation reference.

## Proof of installation ownership

It is required for all eligible FIT generators to evidence that they are the owner of the installation. This should be either:

- A receipt or other document stating ownership, or transfer of ownership
- A copy of the sale and purchase agreement transferring ownership from one party to another

## Start read

For email applications this meter reading must be taken on the date you sign and return this application. For postal applications please leave the reading field blank and we will contact you by telephone or email on or soon after the date that we receive the application. Your Feed in Tariff payments will start from this reading.

months EDF Energy will send you an automated e-mail containing a link to submit your read; for which you have the whole of the month to do so. Once we receive your read we will verify this and then use it, with your generation and export tariff, to calculate your FIT payment.



# Frequently asked questions

## How much will I get paid under the FITs scheme?

FITs consists of two tariffs; a Generation Tariff and an Export Tariff.

Generation Tariff – a fixed rate that a FIT generator will receive for every kWh of renewable energy generated regardless of where the energy is used. To measure the electricity generated there must be an Ofgem approved total generation meter connected to the installation.

Export Tariff – a fixed 4.5p/kWh rate for any surplus amount of energy which is sent back to the electricity grid. Generators will receive the export tariff in addition to the generation tariff.

Both tariffs will be linked to inflation and will be paid to the FITs generator on a quarterly basis subject to receipt of meter readings.

## What if you want your FITs payments to be made to someone else?

Under the FITs scheme you can nominate a third party to receive your FITs payments. For further details contact our Green Energy Team on: **0800 404 9087\***.

## Generation Tariff

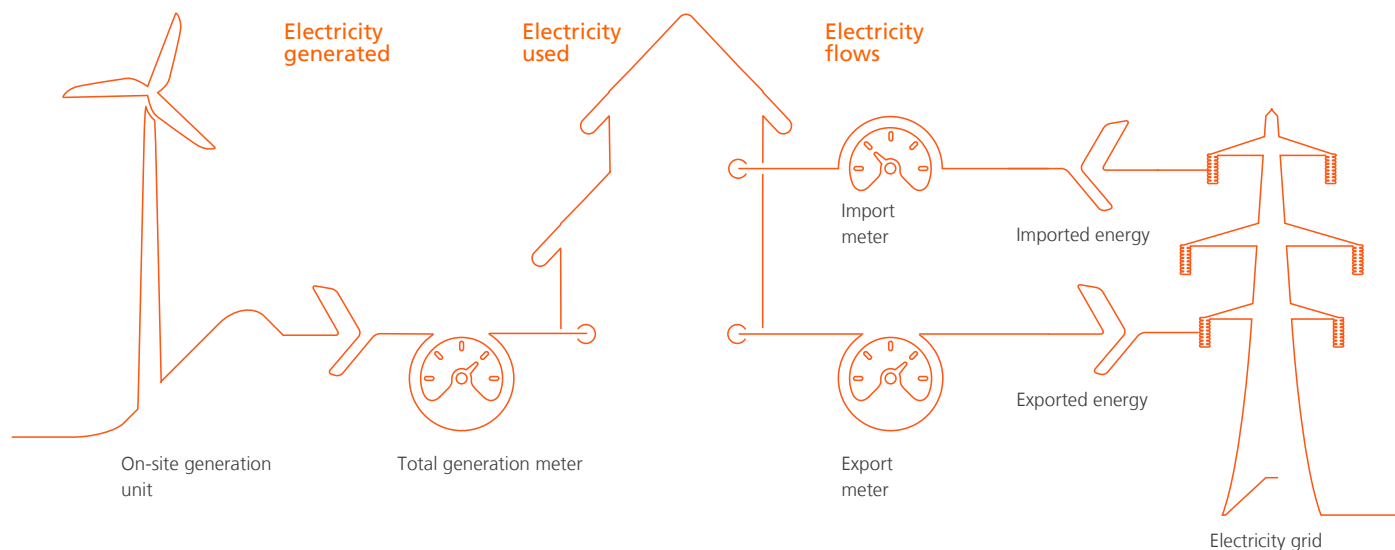
For the latest tariff rates please click [here](#) to direct you to Ofgem's website

## Do I have to sell my exported energy under the FITs scheme?

You can opt in/out of the FITs export tariff on an annual basis. Larger generators may wish to do this if they want to enter contracts negotiated in the wholesale electricity market. Generators off grid will not receive any export payment.

## How long will I be able to receive FITs payments?

The tariffs are available for 20 years (10 years for micro CHP) from the date you joined the scheme or until your installation ceases to operate. Different rules apply for generators migrating from the RO.



\*Lines available 8am to 8pm Monday to Friday and 8.30am to 2pm on Saturday. Calls may be monitored and recorded as part of our customer care programme. Calls to '0800' numbers are free from BT landlines. Other network operators may charge for these calls.



## Frequently asked questions

### **What metering is required under FITs?**

All FITs generators are required to have a valid total generation meter. This measures the amount of electricity the generator produces.

Installations with an installed capacity greater than 30kW are also required to have a half hourly export meter. This measures the amount of electricity which flows from the customers premises to the local electricity distribution network.

These meters are separate from your normal import meter. Your meter will not roll backwards due to onsite generation. All export meters must be registered under the Balancing and Settlement Code (BSC) to enable suppliers to take export meter readings.

As most export supplies usually require an import supply, a combined import/export meter is installed. If you already have an import meter, this may have to be changed to a combined meter. The combined import/export meter is programmed to record your import and export supply separately.

### **When do I have to submit meter readings?**

In order to get paid on a quarterly basis, you should submit meter readings from your total generation meter four times a year. We will provide you with four meter reading months within your FITs Statement of Terms. You can take and submit your meter reading any time within your meter reading month. We recommend that the read is submitted as soon as possible. If we don't receive a meter reading or we are unable to validate the meter read provided by the end of your meter reading month, then your FIT payment will be delayed until the next quarter.

If your installation is above 30kW, you have opted into FITs export tariff and you have an export meter there is no need to provide export meter readings.

### **How will I get paid under FITs?**

We will make payments to your bank account on a quarterly basis.

### **What happens if I receive FIT payments for 25 or more solar PV installations?**

If you are a FIT generator or nominated recipient for FIT payments and you receive an income from 25 or more solar PV installations,

from 1 April 2012 for every additional installation you will receive the multi-installation tariff.

It is important to understand that to determine if you are a multi-installation, Ofgem will take into consideration any connected person receiving FITs payments for PV installations.

Please note that once the multi-installation tariff rate has been applied to your installation, the higher rates cannot subsequently be applied. So if at a later date you decide to transfer the FIT payments to someone else, or the ownership changes to a person who does not meet the above criteria, the multi-installation tariff will still remain.



## Frequently asked questions

### Why do I need to provide an Energy Performance Certificate?

From the 1 April 2012 to be eligible for the standard solar PV tariff rate you will be required to demonstrate that the building which the technology is attached or wired to has an energy efficiency rating of Level D or above, through an Energy Performance Certificate.

If your buildings energy efficiency rating is below Level D then you will receive a set lower tariff rate, which will remain for the duration of the contract, even if the buildings energy efficiency is improved in the future.

Therefore if you are planning to improve your buildings energy efficiency, it maybe worthwhile waiting to apply for the FIT scheme until the improvements have been made. This will mean having a later eligibility date, but you will be eligible for a higher tariff.

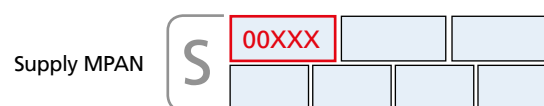
For more information on tariffs click [here](#).

### Who can I set up my DA/DC contract with?

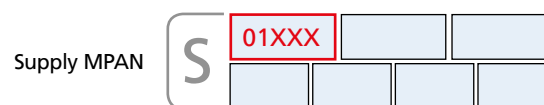
Please contact [B2BFeedinTariff@edfenergy.com](mailto:B2BFeedinTariff@edfenergy.com) for advice on the DA/DC companies that are available to you. More details on meter operators can be found on the association of meter operators website [here](#).

### How do I know what meter I have?

If you are a HH (half hourly) metered import customer, your MPAN will start with 00 (please refer to your import bill).



If you are a NHH (non half hourly) metered import customer, your MPAN will start with 01, 02, 03, 04, 05, 06, 07 or 08 (please refer to your import bill).



### What is a DNO?

A DNO, Distribution Network Operator, is a company licensed to distribute electricity in Great Britain by OFGEM. DNO is also responsible for allocating the core Meter Point Administration Number (MPAN) used to identify individual supply points in its respective areas, as well as operating and administering a Meter Point Administration System that manages the details relating to each supply point. These systems then populate ECOES, the central online database of electricity supply points.

### How long does it take to set up FIT export meter?

Once the MOP and DA/DC contracts are in place, the export meter should be set up within 5 weeks.

### When should I expect my first export payment?

Payments can take up to 90 days from the end of the exported energy quarter.

### When and how do I provide readings from my export meter?

There is no requirement for you to provide meter readings for us, as EDF Energy will obtain your readings (also known as 'advances') from your export meter via the communications line on a quarterly basis.

# Jargon buster

## **Balancing and Settlement Code**

The BSC sets out rules for the registration and metering of electricity flowing to and from electricity transmission and distribution networks; The BSC specifies metering Codes of Practice (CoPs) that set out the technical requirements for metering systems, including accuracy, communications, testing and redundancy.

## **Connected Person**

Means a person whom is in partnership, whether personally or through companies, within the meaning of section 1122 of the Corporation Tax Act 2010

## **Energy efficiency**

This is calculated by estimating what the energy efficiency and carbon dioxide emission would be if energy saving measures we put in place.

## **Export meter**

A meter that measures the amount of electricity which flows from the customers premises to the local electricity distribution network. Only registered meters under the BSC provide this data in a format recognised by energy suppliers for billing purposes.

## **FITs Central Register**

A system which is administrated by Ofgem and will hold details on all FIT generators.

## **FITs Statement of Terms**

A FITs agreement that generators will enter into with a FITs supplier.

## **MCS Accreditation**

Micro Generation Certification Scheme (MCS), is an independent scheme that certifies micro generation products below 50kW and installers in accordance with industry standards.

## **Multi-installation tariff**

This tariff is applied to all new solar PV installations with an eligibility date on or after 1 April 2012, where the FIT generator or the nominated recipient for FIT payments receive an income from more than 25 solar PV installations.

## **Installed Capacity**

This is the maximum amount of energy the generating equipment can produce when operating at its maximum capacity. The installed capacity is measured in kW or MW and should be stated within the technical specification of the generator.

## **Total Generation Meter**

A meter that is normally fitted with the generator (e.g. wind turbine) and measures the amount of electricity the generator produces.

## **Ofgem (Office of the Gas and Electricity Markets)**

Regulator of the electricity and gas markets in Great Britain. Ofgem is administrating the FITs scheme.

## **Voluntary FITs Suppliers**

Smaller energy suppliers who have less than 50,000 customers and therefore are not obliged to supply FITs to their customers. If you are supplied by a voluntary FITs supplier but wish to take your FITs payments from EDF Energy we can still sign you up.

## **Meter Reading Months**

EDF Energy recommends you to submit meter readings from your total generation meter four calendar months per year. We will state your meter reading months on your FITs Statement of Terms. It's important you note these months down, as failure to provide readings on time will delay payment.

## **ROO-FIT process**

The route generators with above 50kW installations have to take to gain accreditation to be eligible for FITs or the Renewable Obligation.



## e-documents - a better way of working

Why an e-document? At EDF Energy we are committed to using the most sustainable working practices wherever possible and this includes when delivering communications to our customers.

E-documents significantly reduce the volume of printed material we need, reducing our carbon footprint.

Our customers appreciate e-documents because they offer timely delivery of easy to access information in an ideal format for the modern screen based working environment.

**[edfenergy.com/largebusiness](http://edfenergy.com/largebusiness)**

To view our fuel mix visit [edfenergy.com](http://edfenergy.com)

EDF Energy Customers plc with registered number 2228297. EDF Energy 1 Limited with registered number 3986835.

Registered offices at 40 Grosvenor Place, Victoria, London, SW1X 7EN. Incorporated in England and Wales. EDF Energy 1 Limited acts as agent of EDF Energy Customers plc for the purposes of collecting all payments in connection with its supply contracts. The responsibility for performance of supply obligations rests with EDF Energy Customers plc.

EDF Energy - EDFE V1.0 02/14 Feed-in Tariffs. © Copyright EDF Energy 2014. All rights reserved.